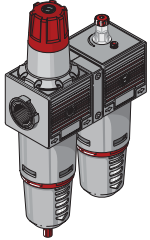


## Gruppo FR+L FR+L Unit



| CODICE-CODE  | REF.                      |
|--------------|---------------------------|
| 095.06.00002 | FR+L 1" 095 20 04 R PE SS |
| 095.06.00001 | FR+L 1" 095 20 08 R PE SS |
| 095.06.00003 | FR+L 1" 095 20 12 R PE SS |
| 095.06.00005 | FR+L 1" 095 5 04 R PE SS  |
| 095.06.00004 | FR+L 1" 095 5 08 R PE SS  |
| 095.06.00006 | FR+L 1" 095 5 12 R PE SS  |

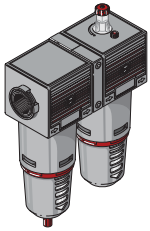
### Versione Scarico Automatico a galleggiante Float type automatic drain version

|              |                           |
|--------------|---------------------------|
| 095.06.00007 | FR+L 1" 095 20 08 R PE SA |
| 095.06.00009 | FR+L 1" 095 20 12 R PE SA |

### Versione Scarico Automatico "Differenziale" "Differential" automatic drain version

|              |                            |
|--------------|----------------------------|
| 095.06.00013 | FR+L 1" 095 20 08 R PE SAD |
| 095.06.00014 | FR+L 1" 095 20 12 R PE SAD |

## Gruppo F+L F+L Unit



| CODICE-CODE  | REF.                |
|--------------|---------------------|
| 095.07.00001 | F+L 1" 095 20 PE SS |
| 095.07.00002 | F+L 1" 095 5 PE SS  |

### Versione Scarico Automatico a galleggiante Float type automatic drain version

|              |                     |
|--------------|---------------------|
| 095.07.00003 | F+L 1" 095 20 PE SA |
| 095.07.00004 | F+L 1" 095 5 PE SA  |

### Versione Scarico Automatico "Differenziale" "Differential" automatic drain version

|              |                     |
|--------------|---------------------|
| 095.07.00005 | F+L 1" 095 20 PE SA |
| 095.07.00006 | F+L 1" 095 5 PE SA  |

## Elemento filtrante Filtering element



| CODICE-CODE  | PROD.  | VERSION   |
|--------------|--------|-----------|
| A95.02.00001 | F - FR | 20 MICRON |
| A95.02.00005 | F - FR | 5 MICRON  |

## Scarico automatico Automatic drain



| CODICE-CODE      | PRODUCT |
|------------------|---------|
| C40.02.00130 SA  | F - FR  |
| C42.02.00012 SAD | F - FR  |

## Kit montaggio scarico automatico Mounting kit for automatic drain



| CODICE-CODE  | PRODUCT  |
|--------------|----------|
| C40.02.00131 | SA - SAD |

## Manometro Gauge



| CODICE-CODE  | Bar  | Psi   | A  | B     | CH. |
|--------------|------|-------|----|-------|-----|
| A95.01.00026 | 0÷12 | 0÷175 | 63 | G1/4" | 14  |

## Accessori e ricambi Spare parts

### Tazza completa per filtro Bowl for filter



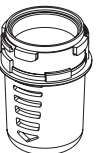
| CODICE-CODE  | PROD.  | VERSION |
|--------------|--------|---------|
| C95.02.00005 | F - FR | PE SS   |

### Tazza con scarico automatico Bowl with automatic drain



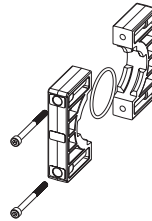
| CODICE-CODE  | PROD.  | VERSION |
|--------------|--------|---------|
| C95.02.00006 | F - FR | PE SA   |
| C95.02.00019 | F - FR | PE SAD  |

### Tazza completa per lubrificatore Bowl for lubricator



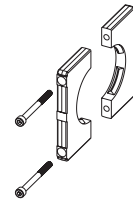
| CODICE-CODE  | PROD. | VERSION |
|--------------|-------|---------|
| C95.03.00004 | L     | PE      |
| C95.03.00007 | IL    | PE      |

## Kit per assemblaggio gruppi Kit assembling units



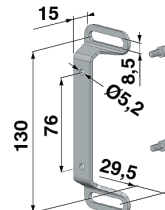
| CODICE-CODE  | PRODUCT    |
|--------------|------------|
| C95.05.00001 | F+R+L      |
| C95.06.00001 | FR+L - F+L |

## Kit di staffaggio a parete Wall fixing kit



| CODICE-CODE  | PRODUCT        |
|--------------|----------------|
| C95.01.00015 | R - F - L - FR |

## Staffa fissaggio a parete Bracket



| CODICE-CODE  |
|--------------|
| C95.01.00018 |

→ = Standard version