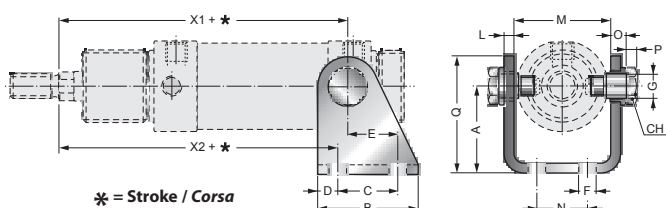


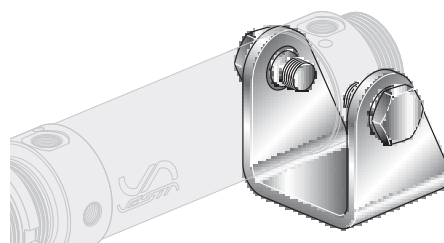
FIXING ACCESSORIES FOR ACMT AND DVMT / ACCESSORI DI FISSAGGIO PER ACMT E DVMT

Note: the fixing screws are not included in the supply of the fittings / *le viti di fissaggio non sono comprese nella fornitura degli accessori.*

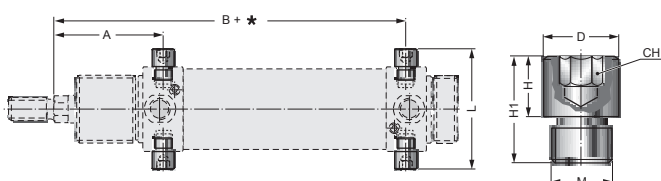


REAR HINGE HORIZONTAL MOUNTING
MONTAGGIO A CONTROCERNIERA

AS/..

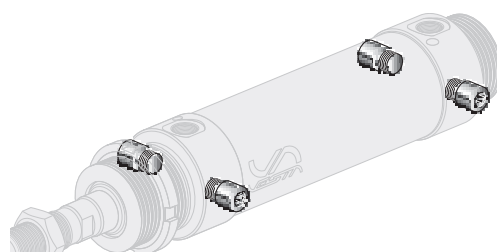


Bore Alesaggio	X1	X2	A	B	C	CH	D	E	ØF	ØG	L	M	N	O	P	Q	Code Codice
32	125	121	35	40	24	13	8	20	7	10	4	38,1	20	6	4	47	AS/32
40	146	143	40	50	30	17	10	27	9	12	5	46,1	28	7	5	53	AS/40
50	158	154	45	54	34	19	10	30	9	14	6	57,1	36	8,5	6	59	AS/50



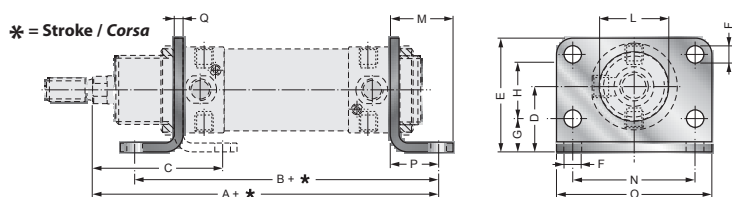
PIVOT FOR FLOATING HINGE MOUNTING
PERNI PER MONTAGGIO A CERNIERA OSCILLANTE

CBF/..



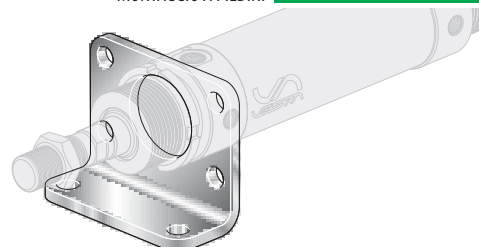
Bore Alesaggio	A	B	CH	ØD	H	H1	L	M	Code Codice
32	47	125	5	10	8	14	51	M8x1	CBF/32
40	57	146	6	12	9,5	16,5	61	M10x1	CBF/40
50	62	158	6	14	11	20	75	M12x1,5	CBF/50

* = Stroke / Corsa



FOOT MOUNTING
MONTAGGIO A PIEDINI

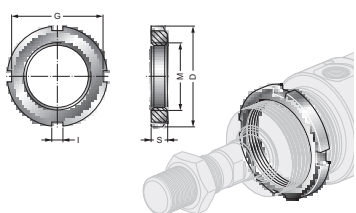
P/..



Bore Alesaggio	A	B	C	D	E	F	G	H	L	M	N	O	P	Q	Code Codice
32	148	124	48	28	49	7	14	28	30	21	52	66	14	4	P/32
40	178	153	60	33	58	9	18	30	38	30	60	80	20	5	P/40
50	190	160	64	40	70	9	20	40	45	30	70	90	20	6	P/50

RING NUT FOR FIXING
GHIERA DI FISSAGGIO

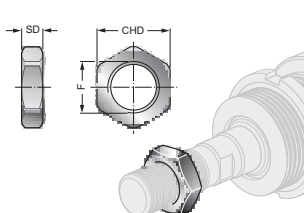
GM/..



Bore Alesaggio	ØD	G	I	M	S	Code Codice
32	45	40	5	M30x1,5	7	GM/32
40	50	46	5	M38x1,5	8	GM/40
50	58	52	6	M45x1,5	9	GM/50

ROD NUT
DADO STELO

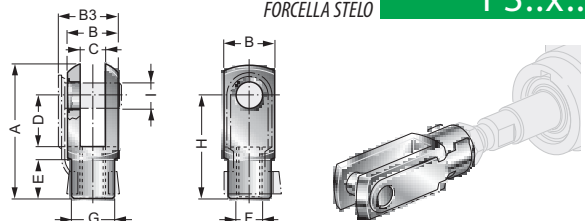
DST/..



Bore Alesaggio	CHD	F	SD	Code Codice
32	17	M10x1,5	6	DST/32
40	19	M12x1,75	7	DST/40
50	24	M16x2	8	DST/50

CLEVIS (ROD) MOUNTING
FORCELLA STELO

FS..x..

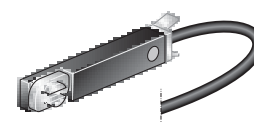
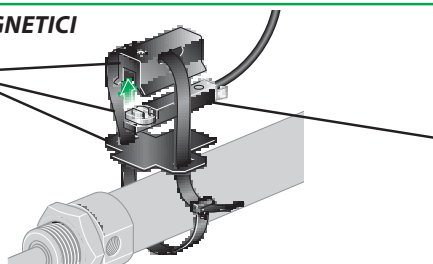


Bore Alesaggio	A	B	B3	C ^{B12}	D	E	ØF	ØG	H	ØH ¹⁹	Code Codice
32	52	20	26	10	20	15	M10 x 1,5	18	40	10	FS/10x1,5
40	62	24	32	12	24	18	M12 x 1,75	20	48	12	FS/12x1,75
50	83	32	40	16	32	24	M16 x 2	26	64	16	FS/16x2

MAGNETIC SWITCHES / FINECORSA MAGNETICI

FFS 02 VN

Bore
Alesaggio (mm):
Ø32 ... **32**
Ø40 ... **40**
Ø50 ... **50**



For magnetic switches features see:
Caratteristiche finecorsa magnetici vedi:
VNCR2, VNPR2, VNCE3, VNPE3.
General catalogue **Pag. A-19**